

## REVIEWS

# WordPerfect Windows 5.2 adds features

Improved tools include drag-and-drop editor, grammar checker, and file finder/indexer

By JOHN LOMBARDI  
CONTRIBUTING EDITOR

Over the years, WordPerfect Corp.'s practice of adding minor enhancements, fixes, and improvements to its highly popular word processing program without changing the version number has drawn the irritated attention of commentators. Now, with WordPerfect 5.2, the Utah company has accepted the criticism and issued an improved product with minor but important enhancements. Ironically, some critics complain that there isn't enough change for a new version.

Here we take a short look at WordPerfect 5.2 for Windows, highlighting the new features and improved scores over Version 5.1. If there were no changes in a category, we didn't include a writeup of it. For a complete review, see our last

comparison of Windows word processors (February 10, 1992, page 78). We based this review on criteria we developed in that comparison.

## PERFORMANCE:

**Basic editing:** WordPerfect has implemented drag-and-drop text, bringing it up to par with Microsoft Corp.'s Word for Windows and Lotus Development Corp.'s Ami Pro. Aside from just having a nifty way to cut and paste, you can also hold the control key and drag to copy your text. Its other basic editing features remain the same. We found our basic editing ease-of-use task was easier to accomplish, contributing to a higher score. We rate basic editing excellent.

**Proofing tools:** Meeting the competition, the name of the game in the word processing wars, required the addition of a grammar checker to match Word for

Windows and Ami Pro. WordPerfect has added Grammatik 5, a stand-alone Windows grammar checker. Grammatik 5 (reviewed October 28, 1992, page 64) does an acceptable job of checking, but its integration with WordPerfect is a bit clumsy and complicated. The grammar checker is not fully integrated as it is in Word or Ami Pro.

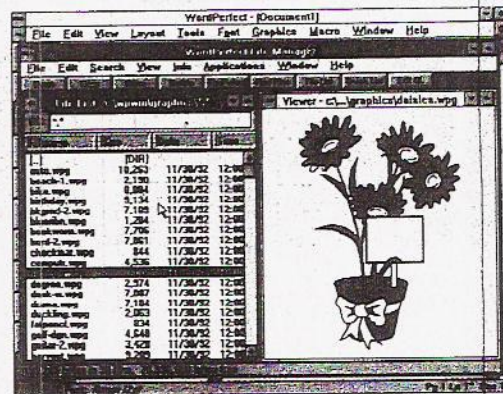
You can access Grammatik from a pull-down menu, but when you are checking grammar, you do so through the clipboard and therefore can lose your document formatting. The grammar checker would be more useful if it were better implemented.

WordPerfect has also enhanced the spelling checker. You can now back-track, edit the text, and resume checking from a previous point in the text. Because of the awkward implementation of Grammatik 5, proofing tools remain very good, the same as in our last review.

**Font and printer support:** WordPerfect now ships with ATM, Version 2.5 and 12 decorative fonts from WordPerfect's Presentations package. However, you cannot use the ATM fonts with WordPerfect's printer drivers unless you purchase a third-party package made to bring fonts into WordPerfect (Prime-Type or More Fonts) or use HP soft fonts. WordPerfect still ships with its impressive list of printer drivers, but you cannot take advantage of them with PostScript typefaces without an add-on package. This holds font and printer support to very good.

**Import and export:** WordPerfect has added Object Linking and Embedding support to the previously existing Dynamic Data Exchange, completing the data exchange and file linking capabilities of the program. WordPerfect does a superb job of handling graphics images and converting graphics files. In addition, WordPerfect has added support for Word 2.0 and Ami Pro 2.0. Other import and export features are unchanged. We rate import and export excellent.

**Networking:** WordPerfect has enhanced the network installation and added some helpful network administration capabilities. File sharing options remain the same, and the program still lacks the capability for user ID annotations. A welcome change to the net-



WordPerfect 5.2 for Windows' enhanced file manager lets you see a graphical preview of your files.

working support is E-mail integration. WordPerfect 5.2 for Windows supports any mail package that is VIM or MAPI compatible as well as Teamlinks for DEC, and they are working on a protocol to offer Profs support, which they plan to have available soon. We rate networking very good.

**Speed:** Overall, WordPerfect 5.2 for Windows was a bit slower than its predecessor. Its PostScript printing time for the complex file was quicker and more than 3 minutes faster than Word's. However, the PCL print time for the simple document was a minute slower. On balance, the speed score remains a good.

**Macros:** WordPerfect has improved its macro support, most notably in the macro help file. The on-line help now includes the complete documentation. If you wish to have a written manual, you can receive one for \$9.95. In addition, WordPerfect has enhanced and expanded the macro commands, bringing them up to par with Ami Pro and Word. The macro format is identical to that in Version 5.1 for Windows. We rate macros excellent.

## EASE OF USE:

The most significant enhancement to WordPerfect 5.2 for Windows is its outstanding file finder/indexer. You can create an index to any or all files on your disk and then find all the files that have, for example, someone's name in them. The indexer will take some time for the first pass on a large disk; we did 37 megabytes of files in 24 minutes, but subsequent passes that update the index run much faster. The search process is extremely quick — almost instantaneous. The indexer and the super file manager both run outside Windows as stand-alone applications, and you can use them even if you don't use WordPerfect for

## BENCHMARKS

## INFO WORLD

### Windows professional word processors

	WordPerfect 5.2 for Windows Version 5.2	WordPerfect 5.1 for Windows Version 5.1	Microsoft Word for Windows Version 2.0
<b>File operations: simple file*</b>			
Open	0:10	0:06	0:03
Save	0:07	0:08	0:02
Print to HP LaserJet	2:47	1:27	1:33
Import WordPerfect 5.1 DOS	0:10	0:07	0:14
<b>File operations: complex file*</b>			
Open	0:18	0:14	0:03
Save	0:05	0:05	0:04
Print preview	0:11	0:13	0:17
Print to QMS-PS 810	2:09	2:48	5:23
<b>Search tools: simple file</b>			
Reorder chapters	0:22	0:21	0:49
Global search and replace	0:12	0:05	0:02
<b>Search tools: complex file</b>			
Search for last word	0:10	0:08	0:01
Global search and replace	0:10	0:09	0:02
<b>Editing tasks: simple file</b>			
Alter margin and repaginate	0:05	0:01	0:02
Change base font and repaginate	0:07	0:02	0:02
Jump to bottom	0:05	0:03	0:01
Generate table of contents	2:59	5:24	1:14
<b>Editing tasks: complex file</b>			
Reformat and repaginate (font)	0:07	0:08	0:02
Jump to bottom	0:07	0:06	0:01
Cut and paste	0:12	0:17	0:09
<b>Layout tasks: complex file</b>			
Place PCX file	0:09	0:08	0:07
Place EPS file	0:07	0:07	0:05

\*Simple file is a 128-page manuscript divided into seven chapters.

\*Complex file is a four-page, highly formatted document with a table, a PCX image, a PIC graph, and an EPS file.

## INSIDE REVIEWS

PhotoMagic 1.0 .....92



Windows. Indeed, you can also run the spelling checker and thesaurus outside of WordPerfect if you want to check the spelling of or find a synonym for an individual word.

WordPerfect has also enhanced its button bars to include more ready-made functions, considerable customizing capability, and a set of different, preconstructed button bar variations for editing, formatting, tables, graphics, and the like.

In releases between 5.1 and 5.2, WordPerfect added macros to increase ease of use. There is an envelope macro, which works with WordPerfect or Windows printer drivers, that stores up to three return addresses and offers bar code support. There is a converter to make typographic

graphic quote marks, as well as several other macros. Ease of use has improved

improved over the previous version. The enhancements move this product closer

## WordPerfect has enhanced its button bars to include more ready-made functions.

from Version 5.1; we rate it excellent.

### VALUE:

In short, WordPerfect 5.2 is significantly

to the high-end battle between Ami Pro 4.0 and Word for Windows 2.0c, but WordPerfect still isn't quite in the middle of that fight. WordPerfect does, however,

remain the program of choice for expert WordPerfect for DOS users who want to convert to Windows because WordPerfect retains all of the characteristics and features of the DOS original, including all the powerful macro, table of authorities, and footnote and endnote capabilities. For these users, WordPerfect is still an excellent value.

John Lombardi is president of a major university and the author of five books. He has been working with computer since 1967.

## REPORT CARD INFO WORLD

WINDOWS PROFESSIONAL WORD PROCESSOR

### WordPerfect for Windows

VERSION 5.2



Criteria	(Weighting)	Score
<b>Performance</b>		
Basic editing	(80)	Excellent
Proofing tools	(80)	Very Good
Layout	(80)	Good
Mail merge	(50)	Very Good
Style sheets	(50)	Good
Font and printer support	(50)	Very Good
Reference tools	(50)	Very Good
Import and export	(50)	Excellent
Networking	(50)	Very Good
Speed	(50)	Good
Macros	(30)	Excellent
<b>Documentation</b>	(75)	Satisfactory
<b>Ease of learning</b>	(75)	Very Good
<b>Ease of use</b>	(130)	Excellent
<b>Support</b>		
Support policies	(25)	Excellent
Technical support	(25)	Very Good
<b>Value</b>	(50)	Excellent
<b>Final score</b>		<b>8.0</b>

### PRODUCT SUMMARY

**Company:** WordPerfect, in Orem, Utah, can be reached at (800) 451-5151.

**List price:** \$495. Upgrade kit available to licensed WordPerfect 5.1 for Windows users for \$39.95, which includes disks and a pamphlet outlining new features; \$99 upgrade from WordPerfect; \$129 competitive upgrade.

**Pros:** File finder/indexing feature for extensive file management; improved button bar support; OLE support; Adobe Type Manager; improved macros.

**Cons:** Sluggish speed; still lacks collapsible outlining; lacks a math function except inside tables.

**Summary:** WordPerfect has enhanced Version 5.2 for Windows by adding several features that mostly boost its ease of use. This product is a fine choice for people already standardized on WordPerfect, but if you're making a new move to a Windows word processor, Word and Ami Pro are still better choices.



## WHEN IT COMES TO MAKING DECISIONS, GET TO THE POINT.

Now let the world's second largest computer maker help you make one decision that will impact decisions out in the field. The Fujitsu 325Point™ pen computer, from Fujitsu's Decision Series.

Inside and out, 325Point was built for portability. Its flexible platform supports multiple operating systems such as Windows for Pen,™ PenDOS™ and PenPoint™ as well as the latest software tools. So developers can easily design custom pen applications and field workers can enter data, process information efficiently and make better decisions on the spot. Plus 325Point's PCMCIA expansion capa-

bility gives you increased data storage and multiple communications options.

Small in size and big on brain power, this three pounder boasts an Am386™ SXLV microprocessor. Fujitsu's power management technology and 325Point's long battery life make it easy to put in a full day of computing. And a backlit screen makes reading easy on the eyes.

Decisions, decisions. Now there's a point where they've become easier. 325Point.

**Contact Fujitsu: 1-800-831-3183 or FAX (313) 92-94-58-99 for international inquiries.**