

College football attendance: Home crowds drop to lowest in 14 years



Home/barroom giant screens, lack of connectivity, noon games, night games, guarantee games . . . whatever the reasons, there are less fans in stadiums.

By Jon Solomon, CBSSports.com, 12-15-14

Major college football home attendance in 2014 dipped to its lowest average in 14 years as many schools continue to struggle to fill seats.

Football Bowl Subdivision crowds for home games averaged 43,483 fans per game, down 4 percent from 2013 and the lowest since 42,631 in 2000, according to a CBSSports.com analysis of NCAA attendance data. This marked the sixth straight season crowds were below 46,000 since they peaked at 46,456 in 2008.

The data counts only home games and not neutral-site venues. Figures represent the announced crowd totals schools reported to the NCAA and not necessarily actual attendance.

This was the first year the NCAA counted attendance from six new FBS schools: Georgia Southern, Old Dominion, Charlotte, Appalachian State, Georgia State and Texas San Antonio. But even when removing those teams from the calculation, the average for returning FBS schools (44,544) would be the lowest since 2002.

The good news: 72 percent of the top 25 attendance leaders experienced increases or remained the same (all of the top 25 were from Power Five conferences or Notre Dame). The bad news: Only 48 percent of the remaining Power Five schools maintained or increased their crowd average, and many schools in smaller conferences continued to decline.

Oliver Luck



Ohio State, which averaged 106,296 fans, ended Michigan's 16-year run atop the attendance leaders. Michigan dropped to third at 104,909 behind No. 2 Texas A&M (105,123).

The biggest increases among Power Five schools: Texas A&M (21 percent), Maryland (14 percent), LSU (11 percent), Mississippi State (10 percent), Rutgers (9 percent), Florida State (9 percent) and UCLA (nine percent). Texas A&M, LSU and Mississippi State expanded their stadiums this season. Maryland and Rutgers were new Big Ten members.

The biggest decreases in the Power Five: Purdue (28 percent), Pittsburgh (17 percent), Virginia (15 percent), Kansas (10 percent), Arizona State (9 percent) and Oklahoma State (8 percent).

Three powerhouse programs continue to see declines as they've struggled to win.

- Texas dropped to 94,103 per game, down 8 percent since the Longhorns' record-breaking crowds in 2009 when they played for the national championship.
- Florida dropped out of the top 10 attendance leaders with 85,834 per game. That's the fourth straight year the Gators were under 90,000 after consistently being above that benchmark.
- Michigan is down 7 percent in only two years after peaking at 112,252 in 2012.

The University of Alabama at Birmingham, which recently became the first major program to drop football in 19 years, had the second-largest FBS increase in 2014. The Blazers averaged 21,841 fans per game, better than 36 other FBS programs and up 107 percent from last year.

Conference breakdown

SEC: Once again it led the country in attendance, averaging a record 78,018 fans. Aided by expanded stadiums and Tennessee's fan resurgence, the SEC was up 3 percent. Florida, South Carolina, Kentucky and Vanderbilt were the only SEC teams with a decrease.

Big Ten: Average attendance was 66,939, down from 70,431 last year. That's largely because of introducing Maryland and Rutgers attendance figures -- which are below most Big Ten schools -- into the conference average. Nine of the 14 Big Ten schools improved their crowds.

Big 12: There was a slight dip (1 percent) to 57,624 fans per game. Six of 10 Big 12 schools increased crowds. For the second straight year, the Big 12 had its smallest average since 2005.

Pac 12: Crowds dropped 2 percent to 52,758 and they are down 10 percent since peaking in 2007. Pac-12 attendance leader UCLA ranked 19th nationally. Only four of 12 conference schools had an increase: UCLA, Arizona, Utah and Washington State. A couple of schools' decreases were very minor.

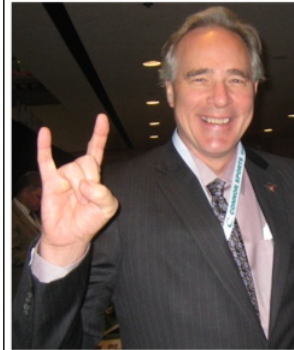
ACC: This league again was last among Power Five schools at 50,016, although its average was up 1 percent in the first year Notre Dame played a condensed schedule against the ACC. Fresh off a national championship, Florida State saw its crowds increase by 9 percent. Half of the ACC's teams had their attendance rise.

FBS ATTENDANCE FIGURES

SCHOOL	2014 AVERAGE	CHANGE FROM 2013	SCHOOL	2014 AVERAGE	CHANGE FROM 2013
Ohio State	106,296	14%	Vanderbilt	24,258	4%



Ohio State	106,296	+1%	Vanderbilt	34,256	-4%
Texas A&M	105,123	+21%	Kansas	34,077	-10%
Michigan	104,909	-6%	Memphis	33,851	+19%
LSU	101,723	+11%	Boise State	32,504	-5%
Penn State	101,623	+5%	Navy	32,502	-9%
Alabama	101,534	+ < 1%	San Diego State	32,294	-3%
Tennessee	99,754	+4%	Washington State	30,794	+4%
Texas	94,103	-5%	South Florida	30,694	-12%
Georgia	92,746	0%	Cincinnati	28,840	-9%
Nebraska	91,249	+ < 1%	UTEP	28,377	+ < 1%
Auburn	87,451	+2%	Houston	28,311	+17%
Florida	85,834	-2%	Air Force	28,161	-14%
Oklahoma	85,162	+1%	UTSA	27,576	-6%
Florida State	82,211	+9%	Connecticut	27,461	-11%
South Carolina	81,381	-1%	Marshall	27,461	+10%
Notre Dame	80,795	0%	Hawaii	27,451	-11%
Clemson	80,176	-2%	Duke	27,291	+5%
Wisconsin	79,520	+1%	Wake Forest	27,210	-4%
UCLA	76,650	+9%	Colorado State	26,575	+43%
Michigan St.	74,681	+3%	UL Lafayette	25,775	-1%
USC	73,272	- < 1%	Tulane	25,012	+27%
Iowa	67,512	+1%	Arkansas State	24,861	- < 1%
Arkansas	66,521	+8%	Nevada	23,862	-4%
Missouri	65,285	+3%	Temple	23,370	+4%
Washington	64,508	-6%	Appalachian St.	23,166	-7%
Ole Miss	61,547	+4%	Southern Miss	22,739	- < 1%
Virginia Tech	61,157	-4%	New Mexico	21,937	-7%
Miss. State	61,127	+10%	UAB	21,841	+107%
Texas Tech	58,934	+2%	SMU	21,528	+15%
Kentucky	57,572	-3%	Ga. Southern	21,102	+42%
Oregon	57,422	- < 1%	Texas State	20,598	+14%
Arizona State	57,179	-9%	Ohio	20,515	-1%
BYU	57,141	-7%	Utah State	20,467	-12%
West Virginia	56,686	+7%	Buffalo	20,403	-10%
North Carolina	54,667	+6%	Old Dominion	20,118	0%
N.C. State	54,398	+2%	Louisiana Tech	20,054	+7%
Okla. State	54,387	-8%	Tulsa	19,647	-1%
Kansas State	53,081	+ < 1%	Wyoming	19,599	+1%
Louisville	52,972	+ < 1%	Toledo	19,548	+6%
Miami (Fla.)	52,518	-2%	North Texas	19,271	-8%
Iowa State	52,197	-6%	Rice	18,562	-1%
Arizona	50,710	+6%	La.-Monroe	18,108	+6%
Rutgers	50,632	+9%	South Alabama	17,445	+10%
Georgia Tech	48,519	-1%	Middle Tenn.	17,408	-7%
Minnesota	47,865	+ < 1%	Troy	16,767	-11%
Stanford	47,862	-6%	Central Michigan	16,306	+23%
California	47,675	-3%	W. Kentucky	16,306	-11%
Maryland	46,981	+14%	Massachusetts	16,088	+2%
Baylor	46,710	+2%	Miami (Ohio)	15,906	- < 1%
Utah	46,437	+3%	UNLV	15,674	-9%
East Carolina	44,786	+2%	W. Michigan	15,625	-10%
TCU	44,716	-1%	Dartmouth	15,300	-4%

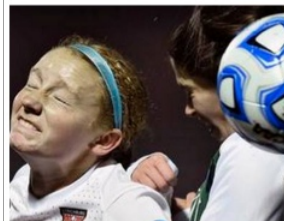
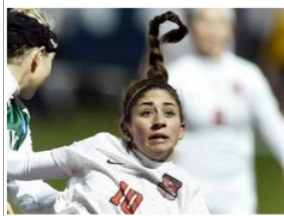


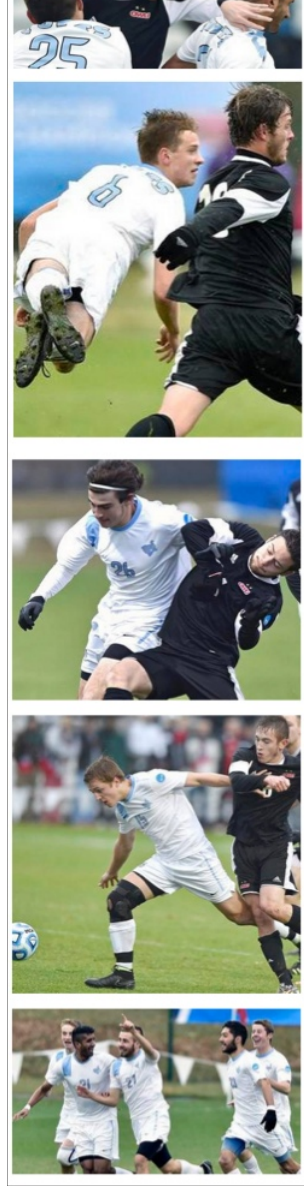
D3 Soccer Semifinals
 Kansas City, Mo., 12-5-14
 Women: Lynchburg v. Illinois Wesleyan
 Men: Tufts v. Ohio Wesleyan

TCU	44,719	+3%	Bowling Green	15,226	+1%
Oregon State	42,176	-2%	San Jose State	15,068	-8%
Indiana	41,657	-6%	E. Michigan	15,025	+271%
Illinois	41,549	-5%	Georgia State	15,006	-4%
Pittsburgh	41,315	-17%	Florida Atlantic	14,122	-3%
Syracuse	40,447	+6%	Northern Illinois	13,563	-34%
Virginia	39,320	-15%	Kent State	13,544	-20%
Northwestern	38,613	-2%	*Charlotte	13,272	-15%
UCF	37,812	-10%	Idaho	12,886	-13%
Colorado	37,778	-2%	New Mexico St.	12,269	-24%
Purdue	35,269	-28%	FIU	11,966	-23%
Fresno State	34,876	-6%	Ball State	9,389	-38%
Boston Coll.	34,270	+4%	Akron	9,170	-49%
Army	34,262	+1%			

* - Charlotte is moving to FBS next season and into Conference USA.

This article has been reprinted on Clips with the author's permission.





2014-15
Learfield Sports Directors' Cup
 D1 Fall Standings as of 12-1-14

Rank	Institution	Total
		Fall
1	Syracuse	215.00
2	Stanford	211.50
3	North Carolina	199.50
4	Colorado	172.00
5	Michigan State	150.00
6	Oregon	147.00
7	New Mexico	146.50
8	Iona	139.50
9	Georgetown	137.00
10	Wisconsin	135.00
11	Providence	126.00
12	Michigan	122.00
13	Arkansas	121.00
14	Iowa State	117.00
15	Penn State	115.00
16	Virginia	113.00
17	Northern Arizona	108.00
18	Florida State	107.50
19	Washington	105.00

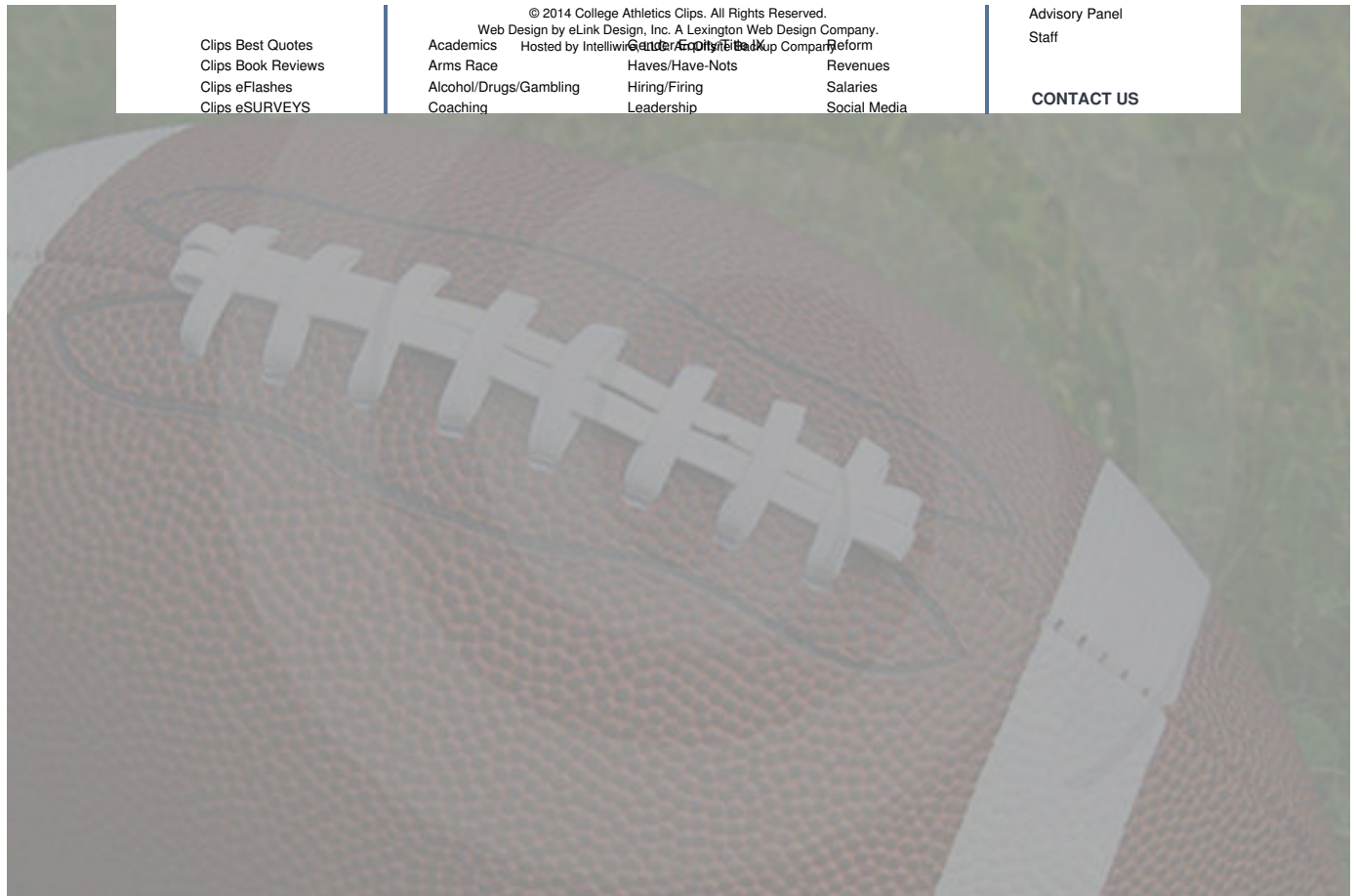
20	UCLA	103.00
21	UConn	100.00
21	Villanova	100.00
23	Oklahoma State	97.00
24	BYU	86.50
25	North Carolina State	85.50

[« Return to News](#)

CLIPS ORIGINALS

ARCHIVES

ABOUT US



[Clips Best Quotes](#)
[Clips Book Reviews](#)
[Clips eFlashes](#)
[Clips eSURVEYS](#)

© 2014 College Athletics Clips. All Rights Reserved.
 Web Design by eLink Design, Inc. A Lexington Web Design Company.
 Hosted by Intelliwire.com
[Academics](#) [College Football](#) [College Football](#) [College Football](#)
[Arms Race](#) [Haves/Have-Nots](#) [Revenues](#)
[Alcohol/Drugs/Gambling](#) [Hiring/Firing](#) [Salaries](#)
[Coaching](#) [Leadership](#) [Social Media](#)

[Advisory Panel](#)
[Staff](#)

[CONTACT US](#)